



COLORADO ATHLETICS





COLORADO ATHLETICS

University of Colorado - Boulder
Athletics Department

Strategic Plan
Athletics Complex Expansion

December 4, 2013



COLORADO ATHLETICS

CU Athletics Strategic Plan:

- **Vision**
- **Mission**



COLORADO ATHLETICS

Facilities:

- **Pac-12 Facilities**
- **Current Footprint**
- **CU Athletics Complex Expansion**



COLORADO ATHLETICS

Pac-12 Facilities





COLORADO ATHLETICS

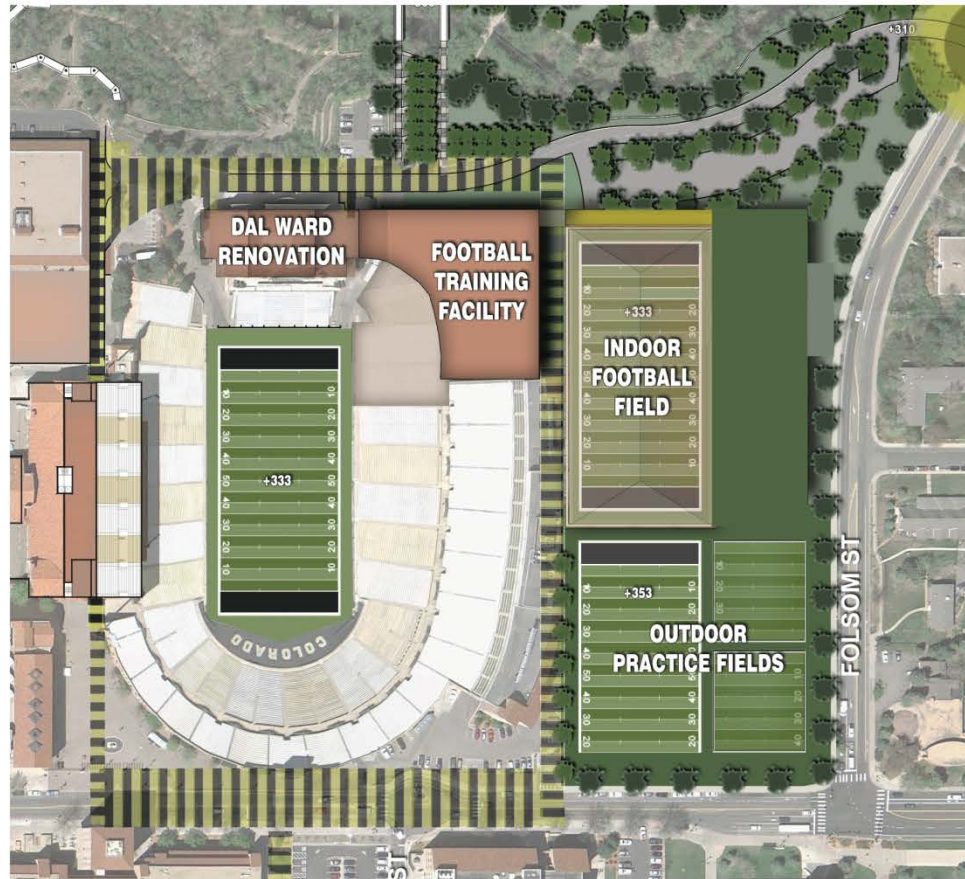
Facilities – Existing Aerial View





COLORADO ATHLETICS

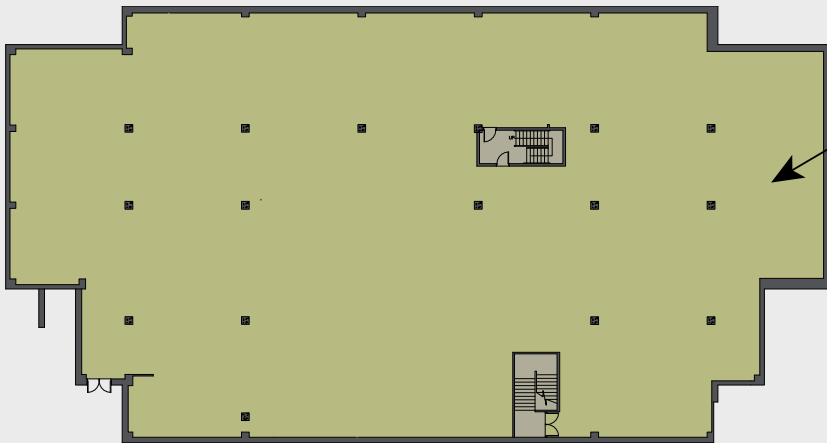
Facilities – CU Athletics Complex Expansion





Facilities — Sub-Basement Dal Ward

Proposed Usage: All-Sports Strength Training Room



CURRENT SQ FT: 9,941
PROPOSED SQ FT: 20,293
PERCENTAGE INCREASE: 104%



Facilities — Field Level Dal Ward

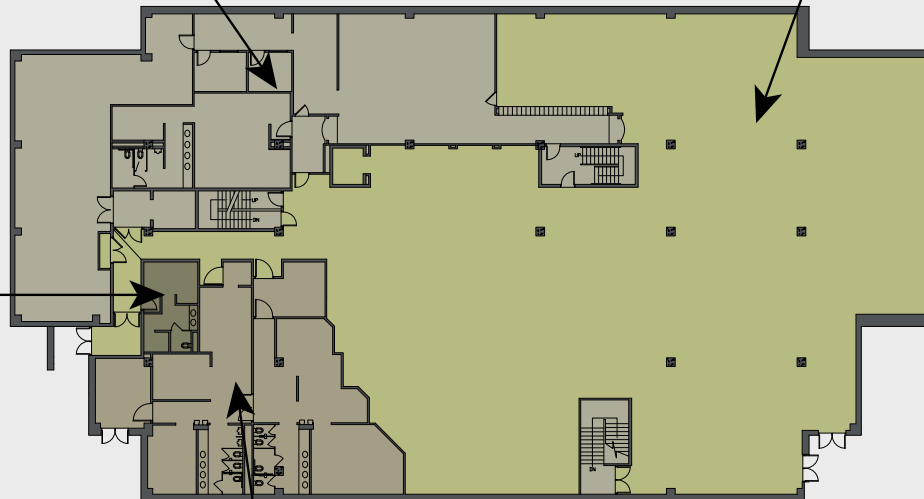
Proposed Usage: All-Sports Locker Rooms, Equipment Room & Visitors Locker Room

**ALL-SPORTS
EQUIPMENT ROOM**
4,585 SQ FT

ALL-SPORTS LOCKER ROOMS
CURRENT SQ FT: 2,437
PROPOSED SQ FT: 11,875
PERCENT INCREASE: 387%

**OFFICIALS
LOCKERS**
257 SQ FT

**VISITORS LOCKER ROOM/
TRACK LOCKER ROOMS**
2,437 SQ FT



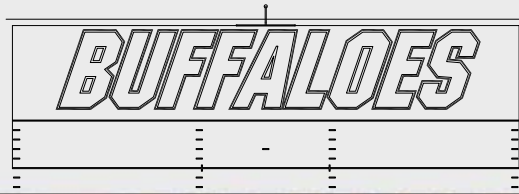
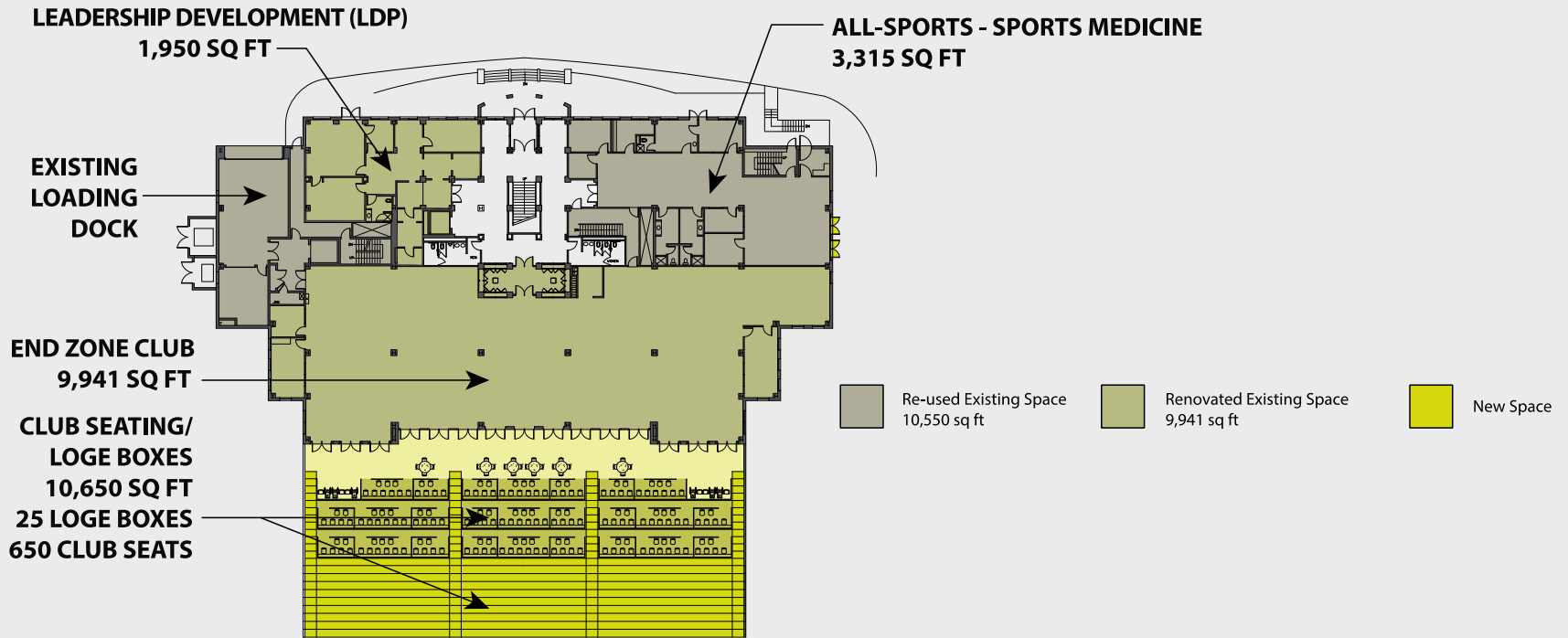
Re-used Existing Space
7,279 sq ft

Renovated Existing Space
11,875 sq ft



Facilities — First Floor Dal Ward

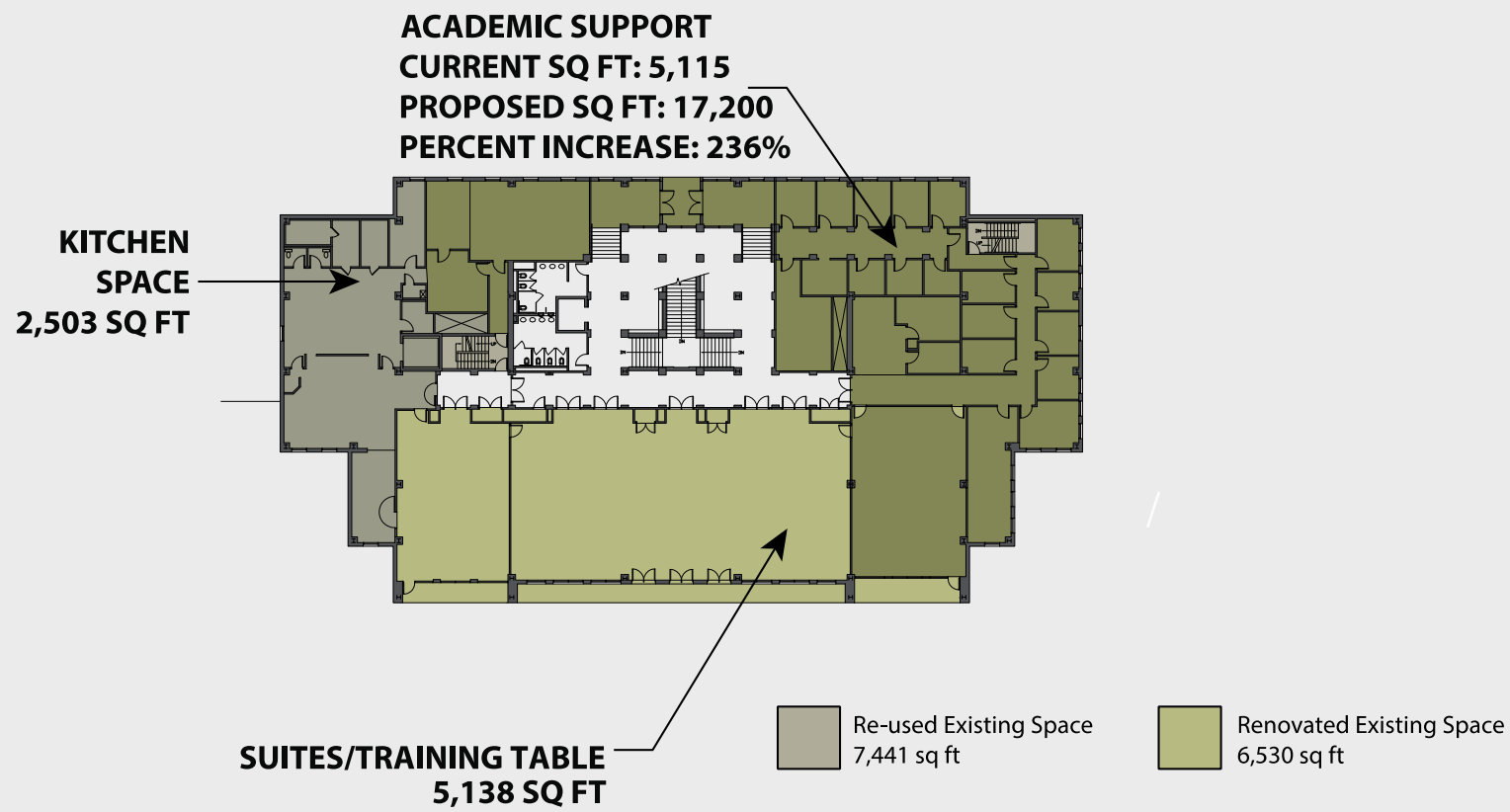
Proposed Usage: LDP, Sports Medicine, End Zone Club & Loge Boxes





Facilities — Second Floor Dal Ward

Proposed Usage: Academics & Training Table





COLORADO ATHLETICS

Facilities — Fourth Floor East Club Level

Proposed Usage: All - Sports Offices



STADIUM SKYBOX LEVEL 4 - ELEVATION



Facilities — Field Level NE Corner

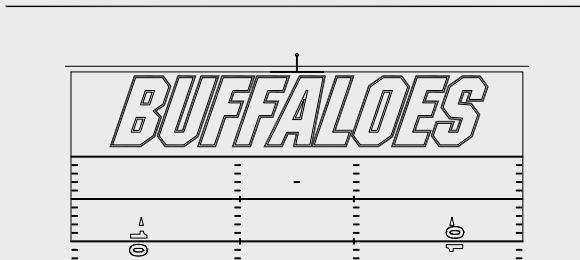
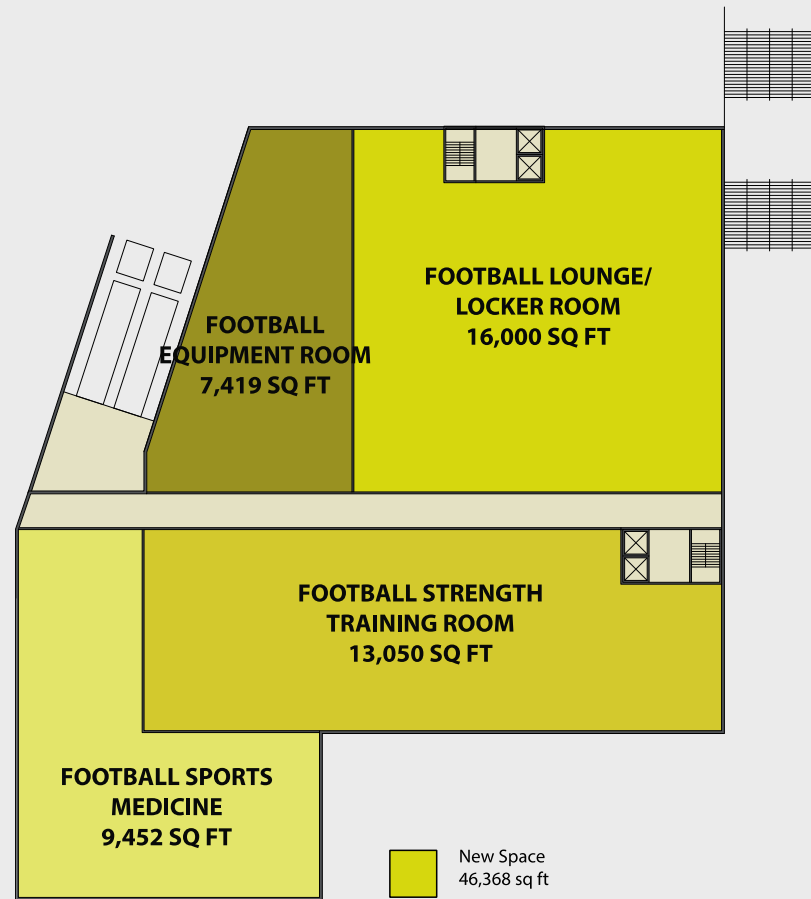
Proposed Usage: FB Equipment, Locker Rooms, Strength Training, Sports Medicine

EQUIPMENT ROOM
CURRENT SQ FT: 4,585
PROPOSED SQ FT: 7,419
PERCENT INCREASE: 61%

FOOTBALL LOUNGE/LOCKER ROOM
CURRENT SQ FT: 4,512
PROPOSED SQ FT: 16,000
PERCENT INCREASE: 254%

SPORTS MEDICINE
CURRENT SQ FT: 3,315
PROPOSED SQ FT: 9,452
PERCENT INCREASE: 185%

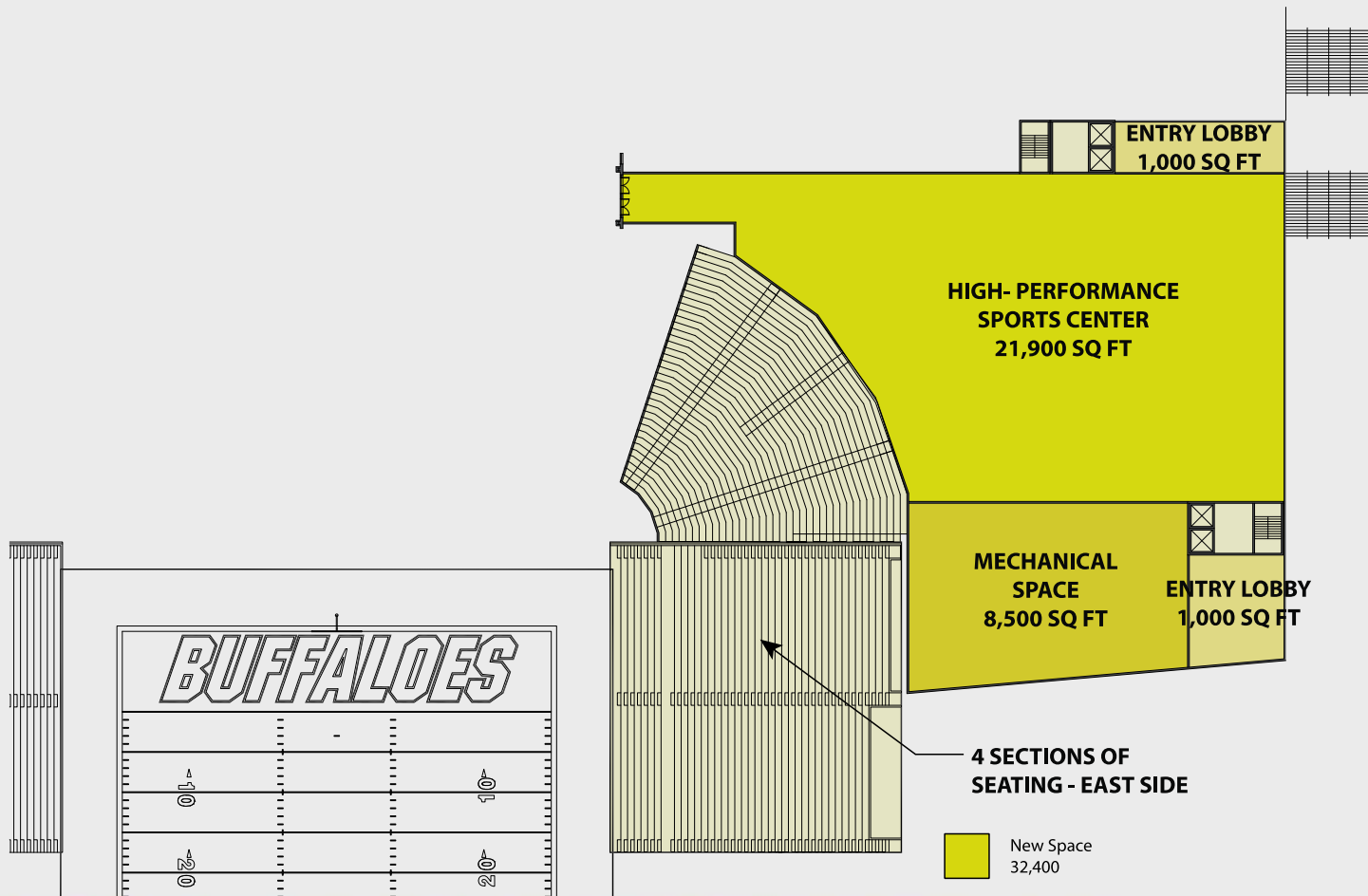
STRENGTH TRAINING ROOM
CURRENT SQ FT: 9,941
PROPOSED SQ FT: 13,050
PERCENT INCREASE: 31%





Facilities — First Floor NE Corner

Proposed Usage: High-Performance Sports Center & Entry Lobby





COLORADO ATHLETICS

High-Performance Sports Center



COLORADO ATHLETICS

Assessments

- Psychological Health
 - Decision making skills, manage emotions, self confidence
- Resiliency
 - Mental toughness, success handling skills
- Medical History
 - General health, pre-existing risk factors, limiting conditions
- Metabolic
 - Baseline conditioning, training potential
- Biomechanics
 - Dysfunctional movement patterns, injury risks, video analysis
- Nutrition
 - Knowledge, understanding, and habits



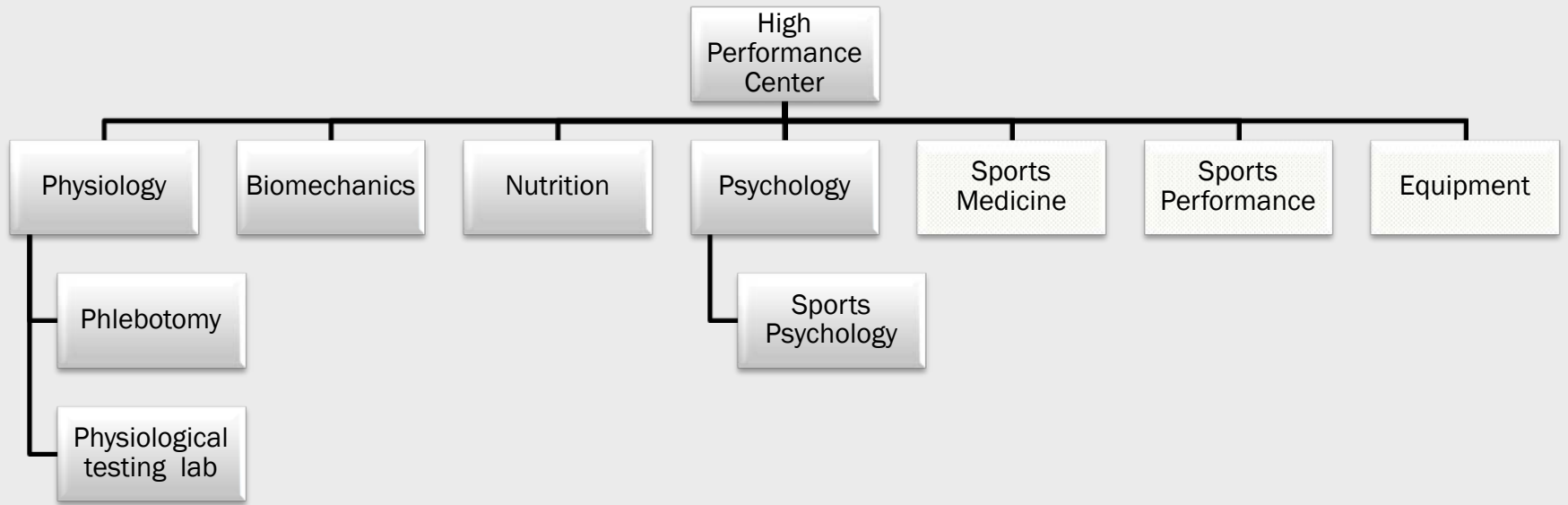
COLORADO ATHLETICS

Programs

- Monitor
 - Continuous tracking for optimal efficiency and opportunity identification
- Corrective
 - Address measured deficiencies and injuries
- Growth
 - Individualized programs developed in response to identified opportunities for growth so athlete achieves his/her potential



High Performance Sports Center





COLORADO ATHLETICS

UCCS

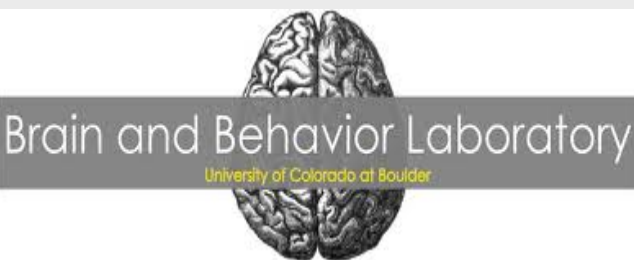


**Department of
Psychology &
Neuroscience**

 University of Colorado, Boulder
Department of Psychology and Neuroscience



College of
Engineering
& APPLIED SCIENCE



 **SPORTS MEDICINE**
University of Colorado



Anschutz Health and Wellness Center

UNIVERSITY OF COLORADO **ANSCHUTZ MEDICAL CAMPUS**



COLORADO ATHLETICS

Outcomes / Opportunities

- Comprehensive quality care provided to the student athlete
- Provide a path for each athlete to achieve optimal performance
- Collaborative relationship with campus in research and health program development
- Multi campus collaboration



COLORADO ATHLETICS

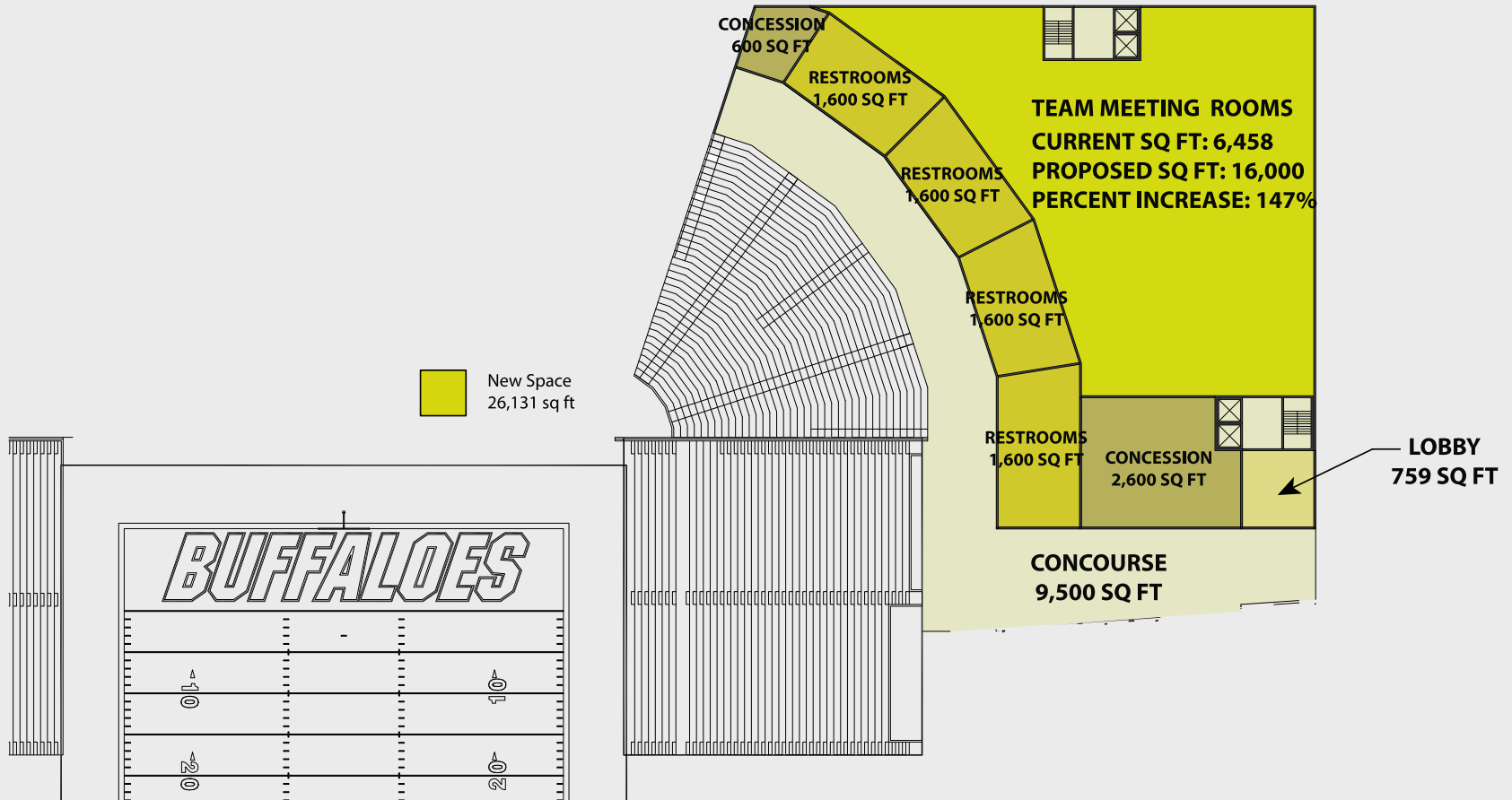
More Opportunities

- Community Programs
 - Individual based
 - Corporate based
- Revenue Streams
 - Graduate degree
 - In-house high performance center
 - e-coaching / e-monitoring
 - Camps
 - Local athletes
 - National athletes & teams
 - International athletes & teams



Facilities — Second Floor NE Corner

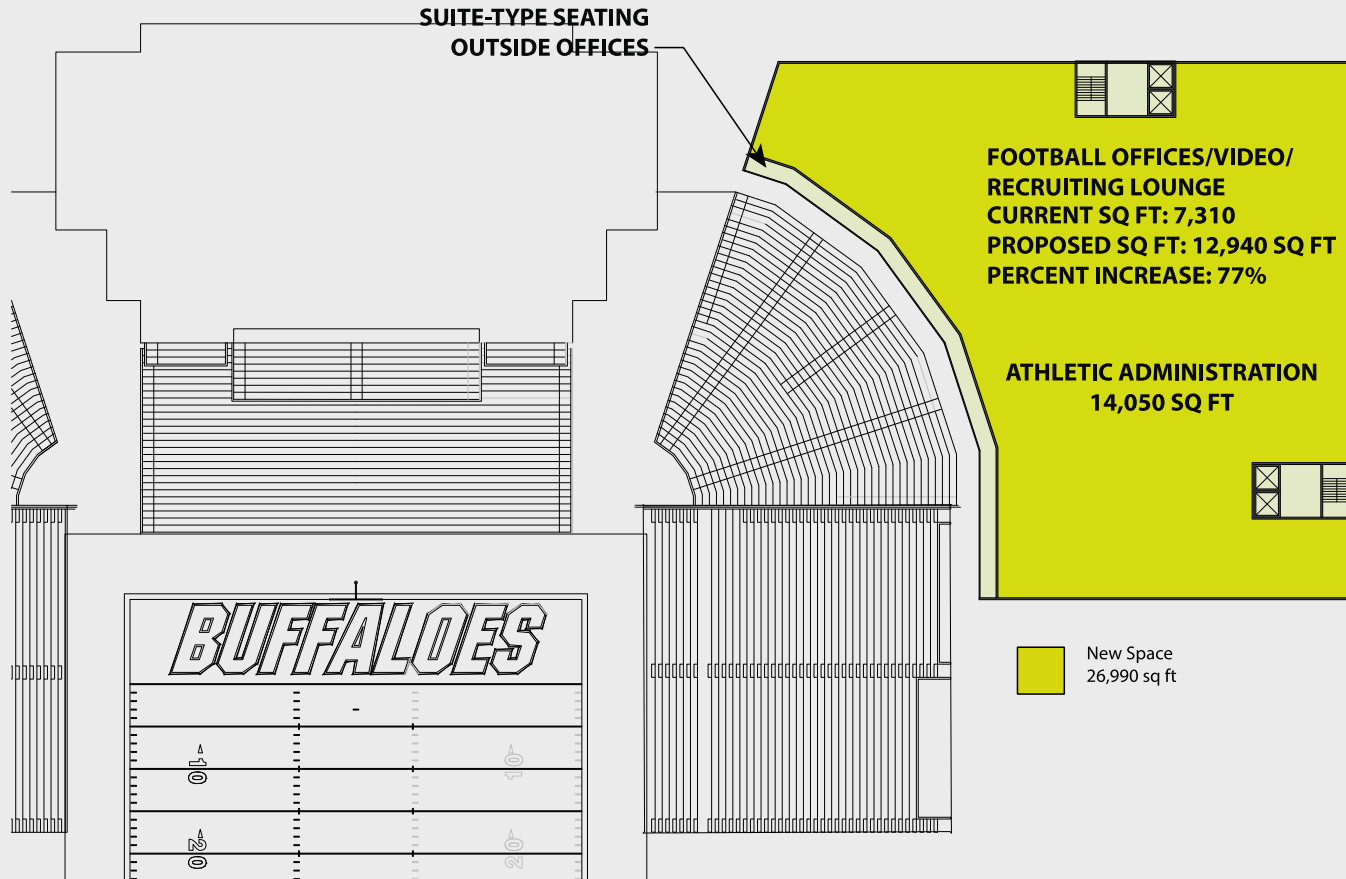
Proposed Usage: Team Meeting Rooms





Facilities — Office Level NE Corner

Proposed Usage: Offices, Recruiting Lounge & Suites

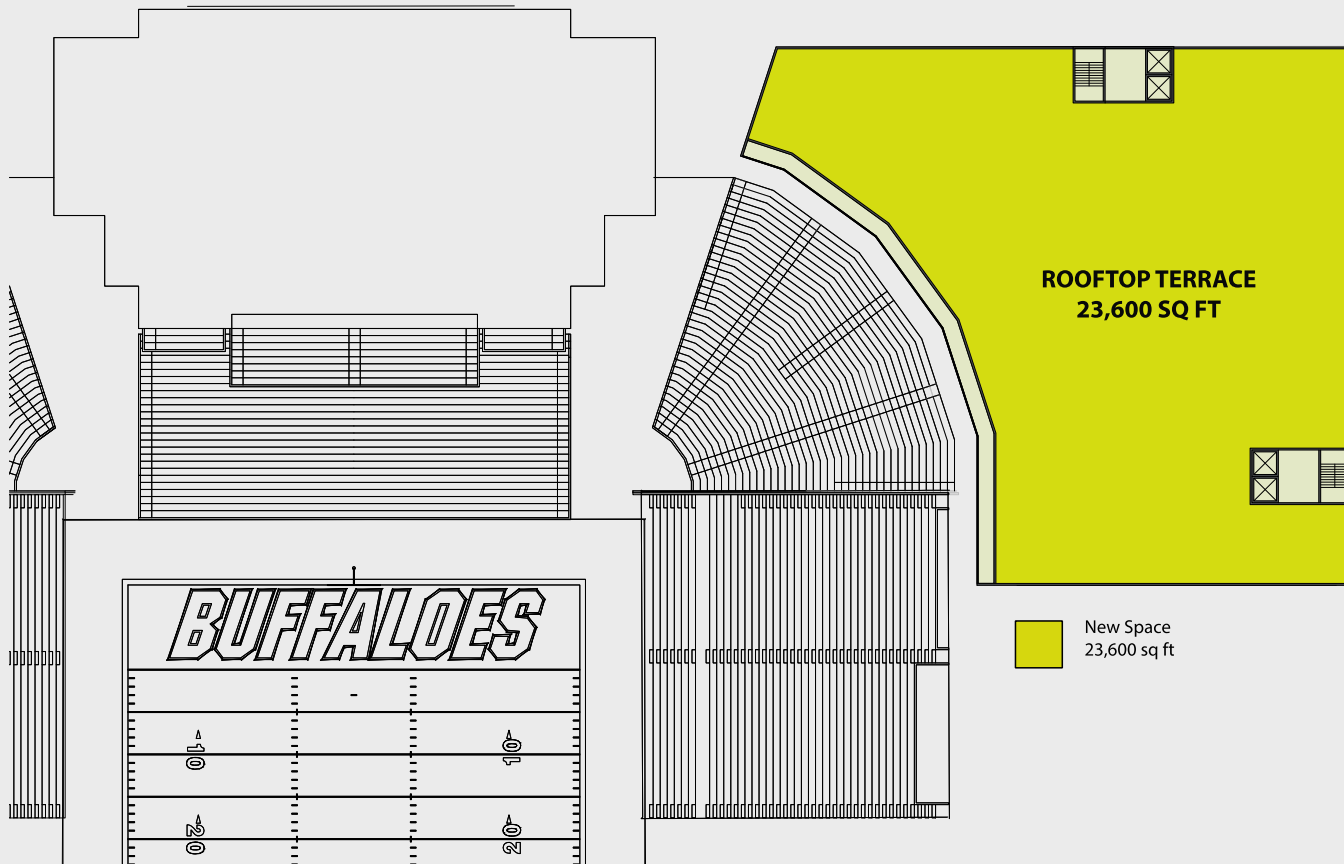




COLORADO ATHLETICS

Facilities — Roof Level NE Corner

Proposed Usage: Rooftop Terrace





COLORADO ATHLETICS

South End Zone Retail





COLORADO ATHLETICS

Facilities — Indoor Practice Field

